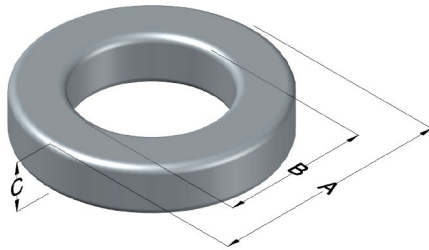




0078907A7

110 Delta Drive
 Pittsburgh, PA 15238
 NAFTA Sales: (1)800-245-3984
 HK Sales : (852)3102-9337
 magnetics@spang.com
 www.mag-inc.com



X _F L _{UX} Permeability (μ)	A _L (nH/T ²)	Core Marking			Coating Color
		Lot Number	Part Number	Inductance Grade	
60	85 ± 8%	XXXXXX	78907A7	N/A	Brown

Dimensions	Uncoated		Coated Limits			Packaging
	(mm)	(in)	(mm)	(in)		
OD (A)	77.80	3.063	78.95	3.108	max	Cardboard cut-outs Box Qty= 40 pcs
ID (B)	49.20	1.938	48.20	1.898	min	
HT (C)	15.9	0.625	17.1	0.670	max	

Electrical Characteristics			Physical Characteristics						
Watt Loss @ 50 kHz, 100mT max(mW/cm ³)	DC Bias min (A-T/cm)		Voltage Breakdown wire to wire min (V _{AC})	Break Strength min (kg)	Window Area W _A (mm ²)	Cross Section A _e (mm ²)	Path Length L _e (mm)	Volume V _e (mm ³)	Weight (g)
	80%	50%							
950	60	120	1000	113	1,820	221	196	43,400	320

Winding Information					Temperature Rating	
Winding Length Per Turn				Wound Coil Dimensions (mm)		Curie Temp: 700°C
Winding Factor	(mm)	Winding Factor	(mm)	Maximum OD (70%)	113	Coating Temp (Continuous up to): 200°C
				Maximum HT (70%)	57.7	
0%	64.7	40%	89.9	Surface Area (mm ²)		Notes:
20%	77.2	45%	93.1	Unwound Core		
25%	80.5	50%	96.8	40% Winding Factor		
30%	82.7	60%	104			
35%	86.8	70%	113			

Typical DC Bias Performance

